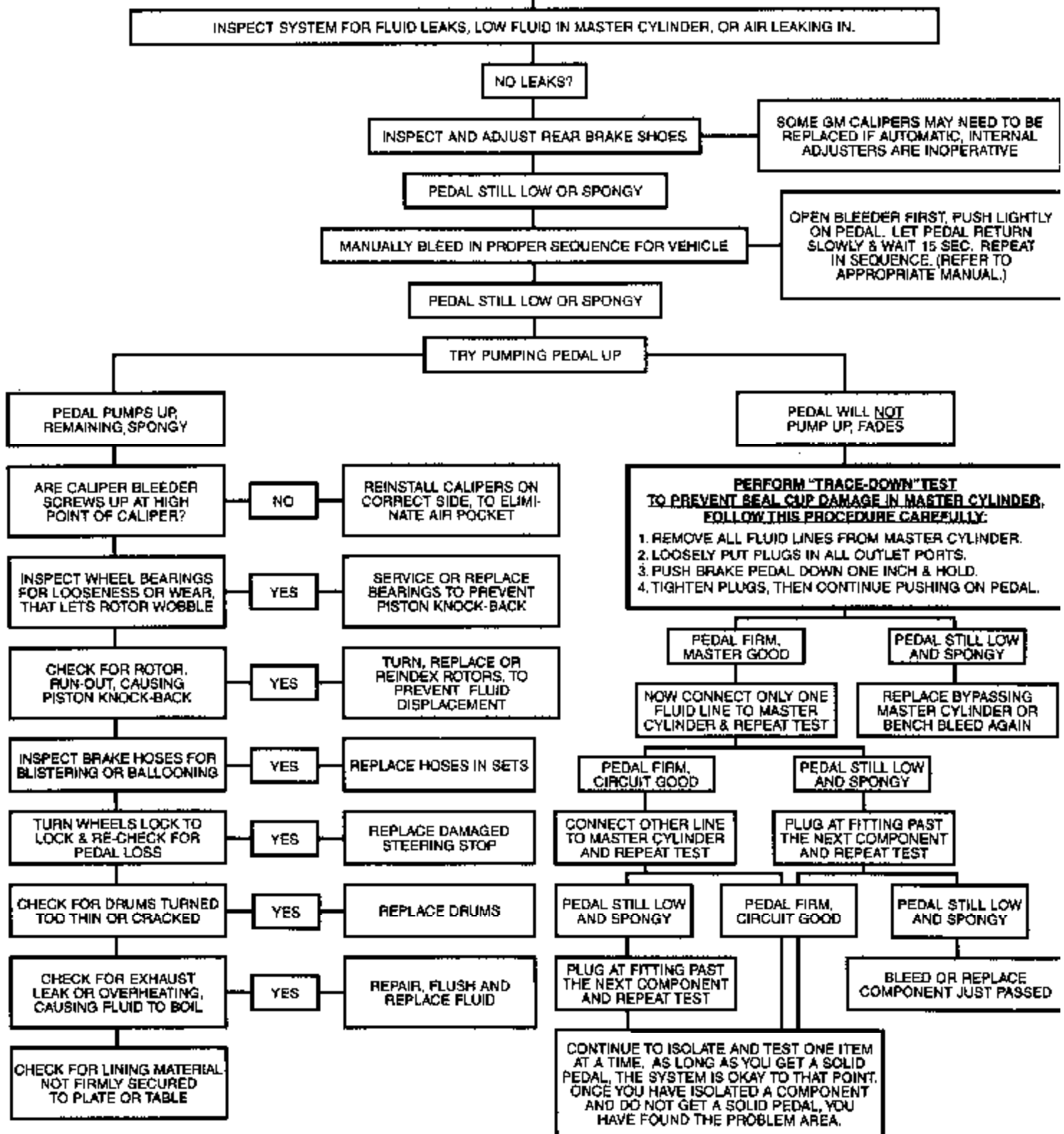
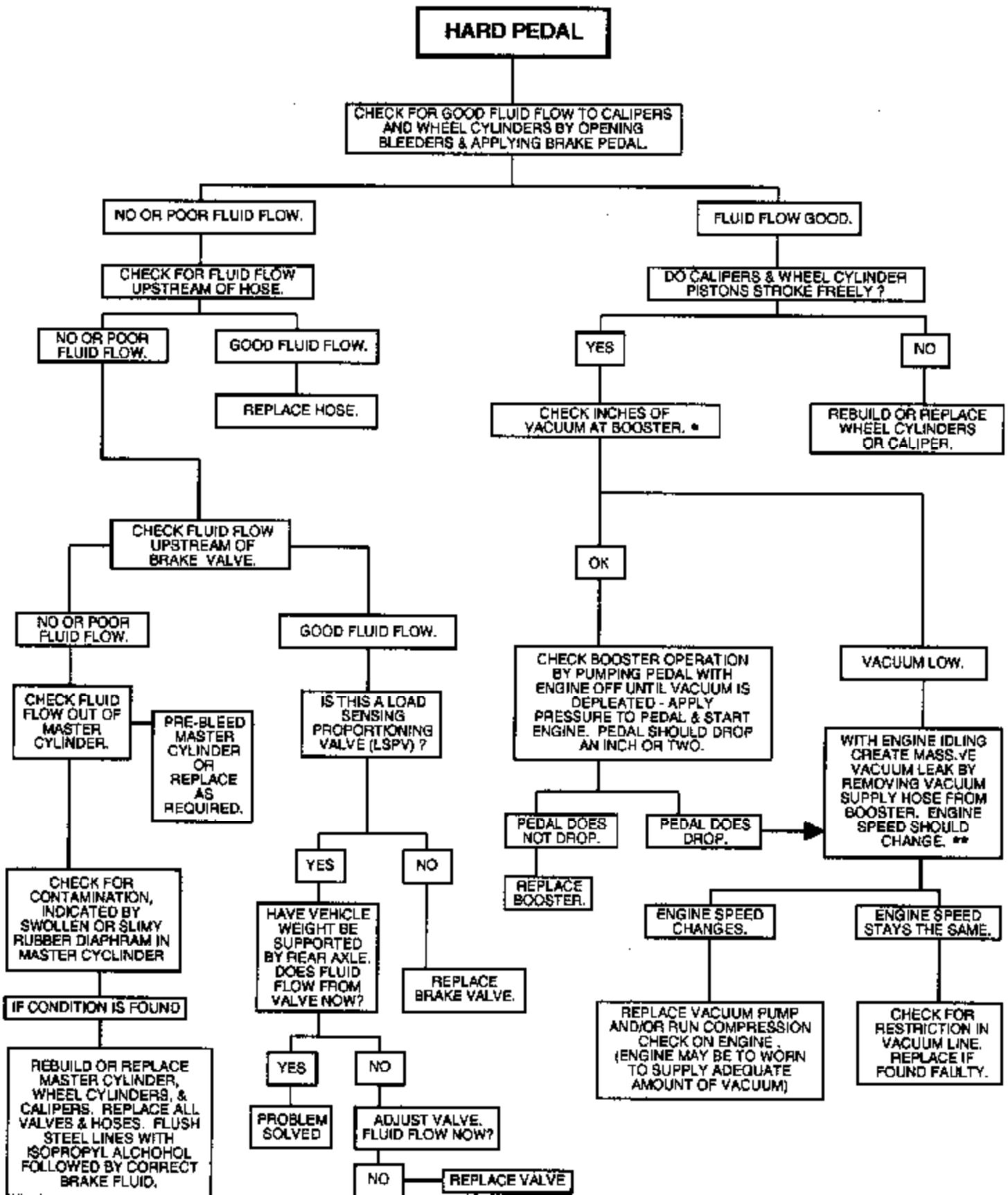


# Diagnostic Flow Charts

## SOLVING LOW BRAKE PEDAL, SPONGY OR DROPPING PEDAL



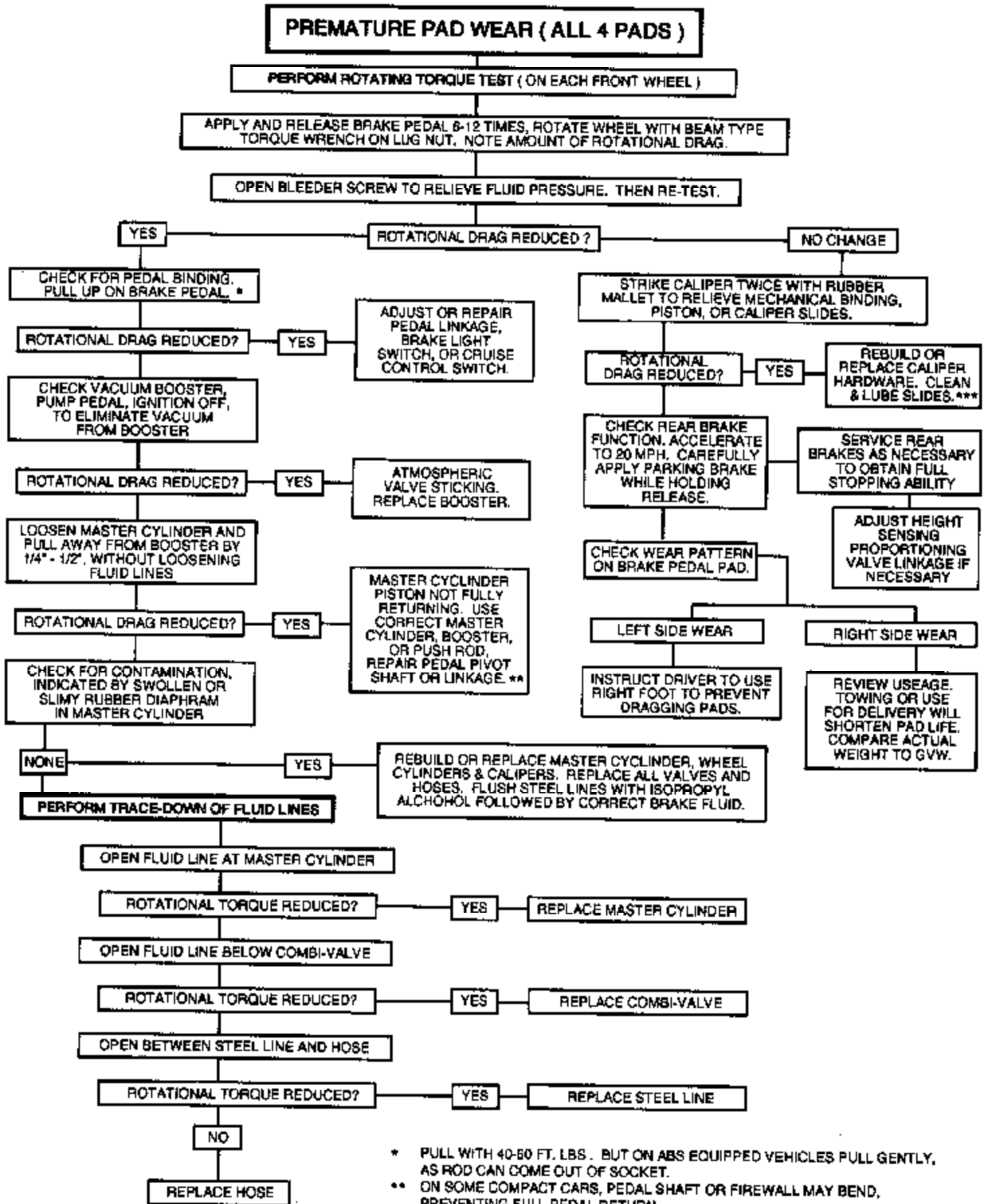
# Diagnostic Flow Charts (Cont.)



\* VACUUM OF CAR WITHOUT PUMP SHOULD BE A MINIMUM 17 INCHES AT SEA LEVEL - 15 INCHES AT 5000 FEET. VACUUM OF CAR WITH PUMP SHOULD BE 20 - 25 INCHES AT SEA LEVEL - 18 INCHES AT 5000 FEET.

\*\* CARBURATED ENGINE SHOULD STALL OR RUN VERY POORLY. FUEL INJECTED ENGINE SHOULD SPEED UP SLIGHTLY.

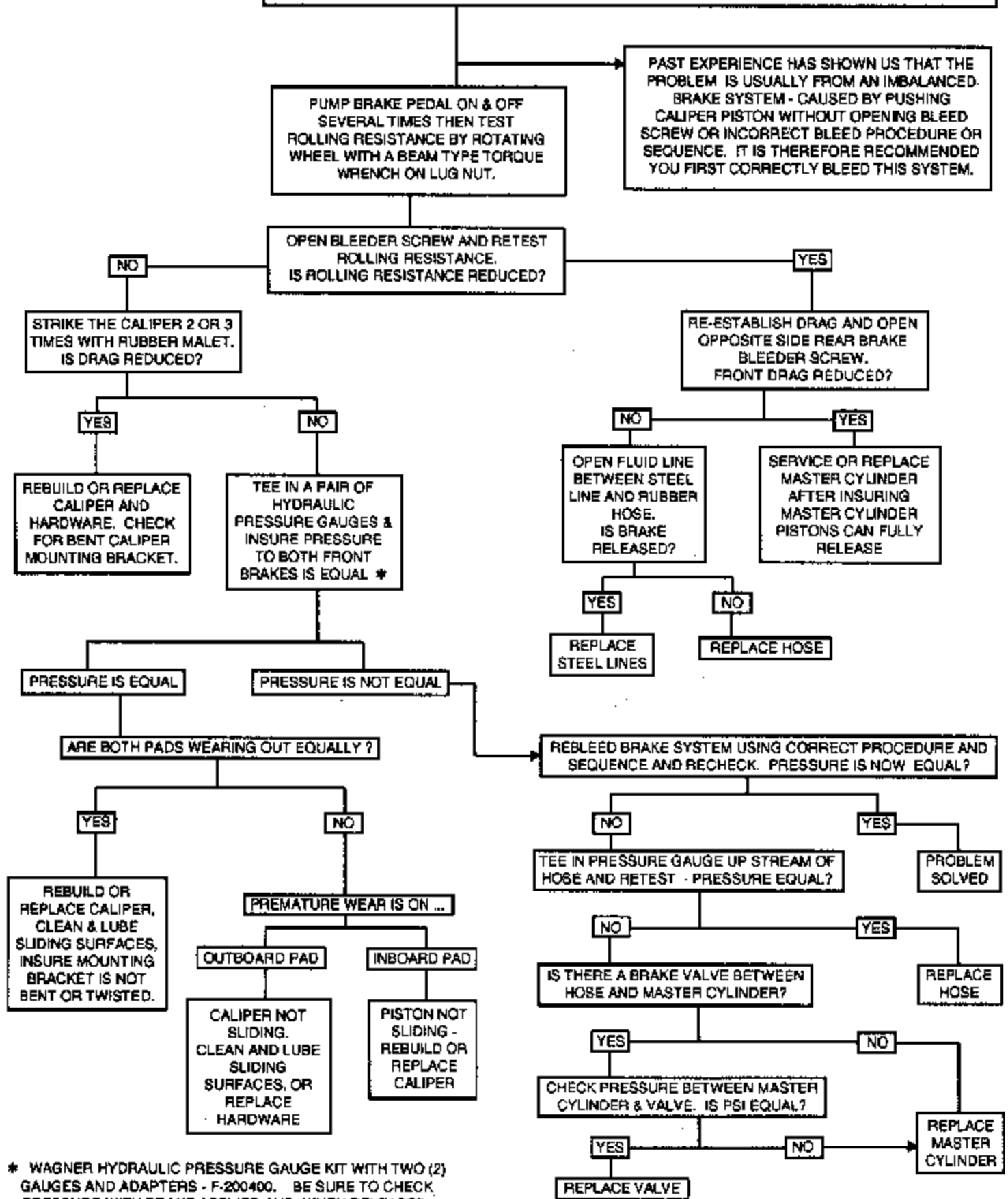
# Diagnostic Flow Charts (Cont.)



- \* PULL WITH 40-60 FT. LBS. BUT ON ABS EQUIPPED VEHICLES PULL GENTLY, AS ROD CAN COME OUT OF SOCKET.
- \*\* ON SOME COMPACT CARS, PEDAL SHAFT OR FIREWALL MAY BEND, PREVENTING FULL PEDAL RETURN.
- \*\*\* BOTH SIDE SHOULD HAVE SAME TYPE OF PISTON, STEEL & STEEL, ETC. MAKE SURE SLIDING PINS ARE LATEST STYLE; USE ONLY SILICON GREASE.

# Diagnostic Flow Charts (Cont.)

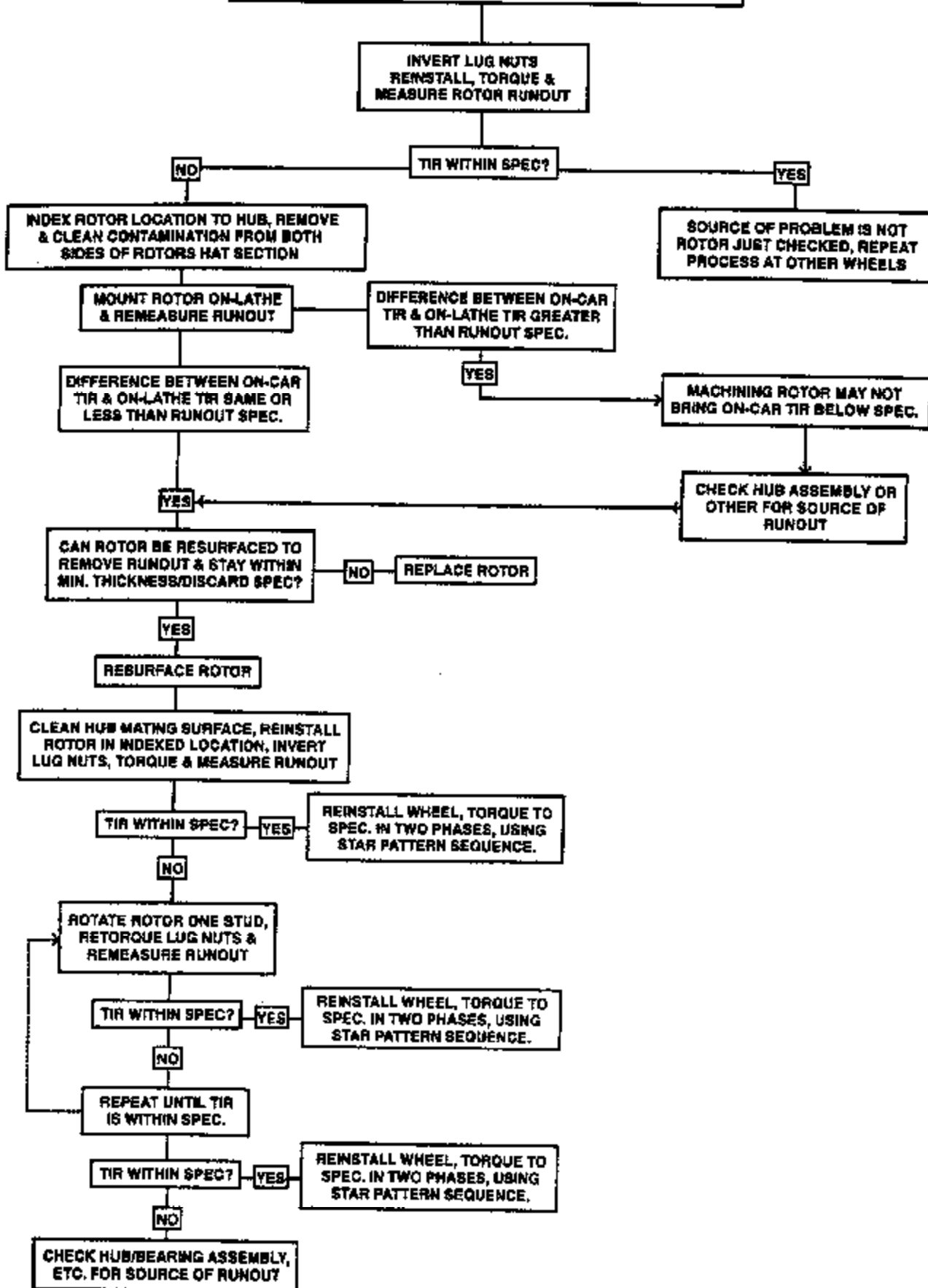
**ONE FRONT BRAKE PAD SET WEARS PREMATURELY  
FRONT WHEEL DRIVE CAR ONLY ( DIAGONAL SPLIT HYDRAULICS )**



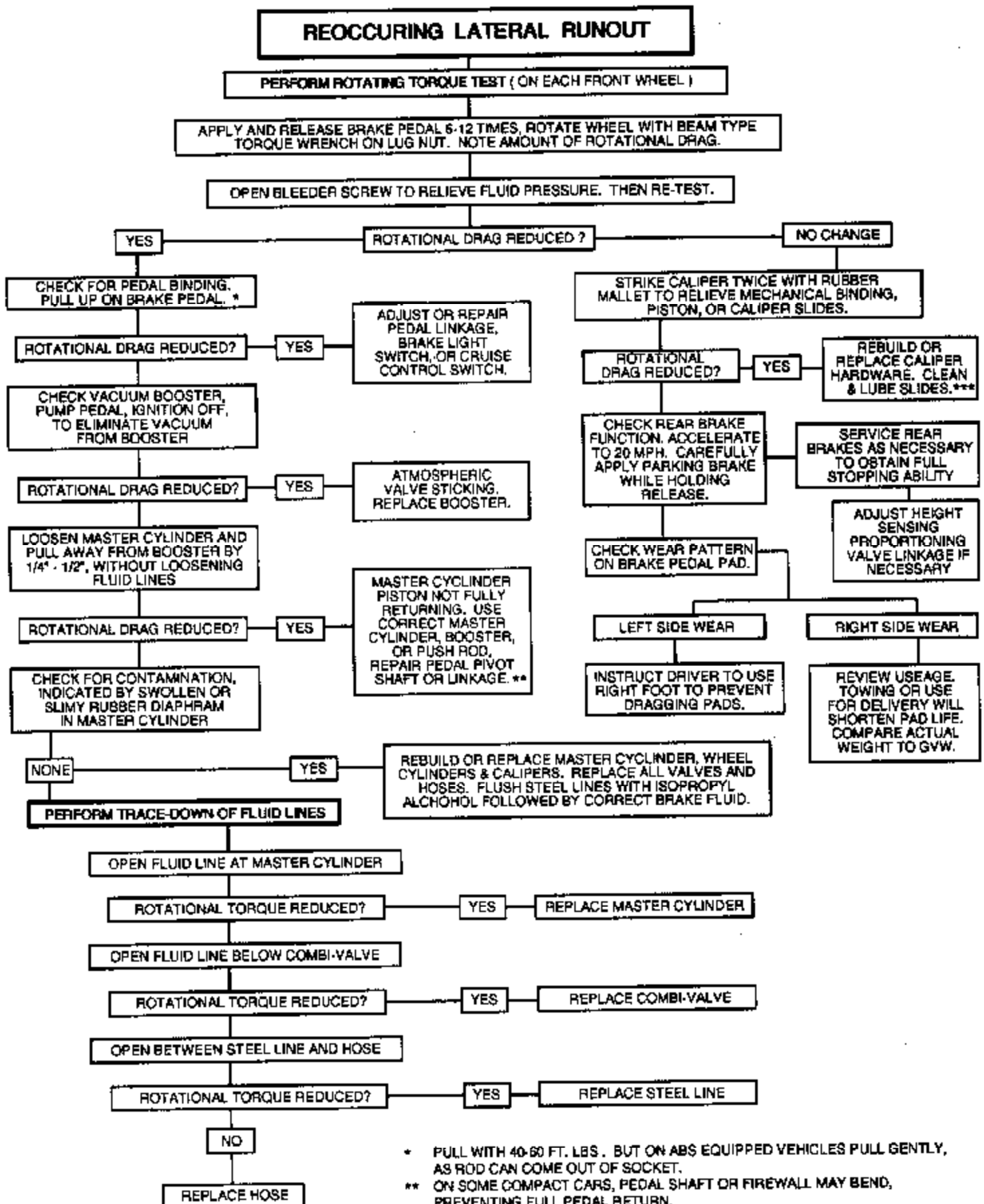
\* WAGNER HYDRAULIC PRESSURE GAUGE KIT WITH TWO (2) GAUGES AND ADAPTERS - F-200400. BE SURE TO CHECK PRESSURE WITH BRAKE APPLIED AND WHEN RELEASED.

# Diagnostic Flow Charts (Cont.)

## SOLVING BRAKE VIBRATION/PEDAL PULSATION ON VEHICLES WITH HUB-LESS ROTORS

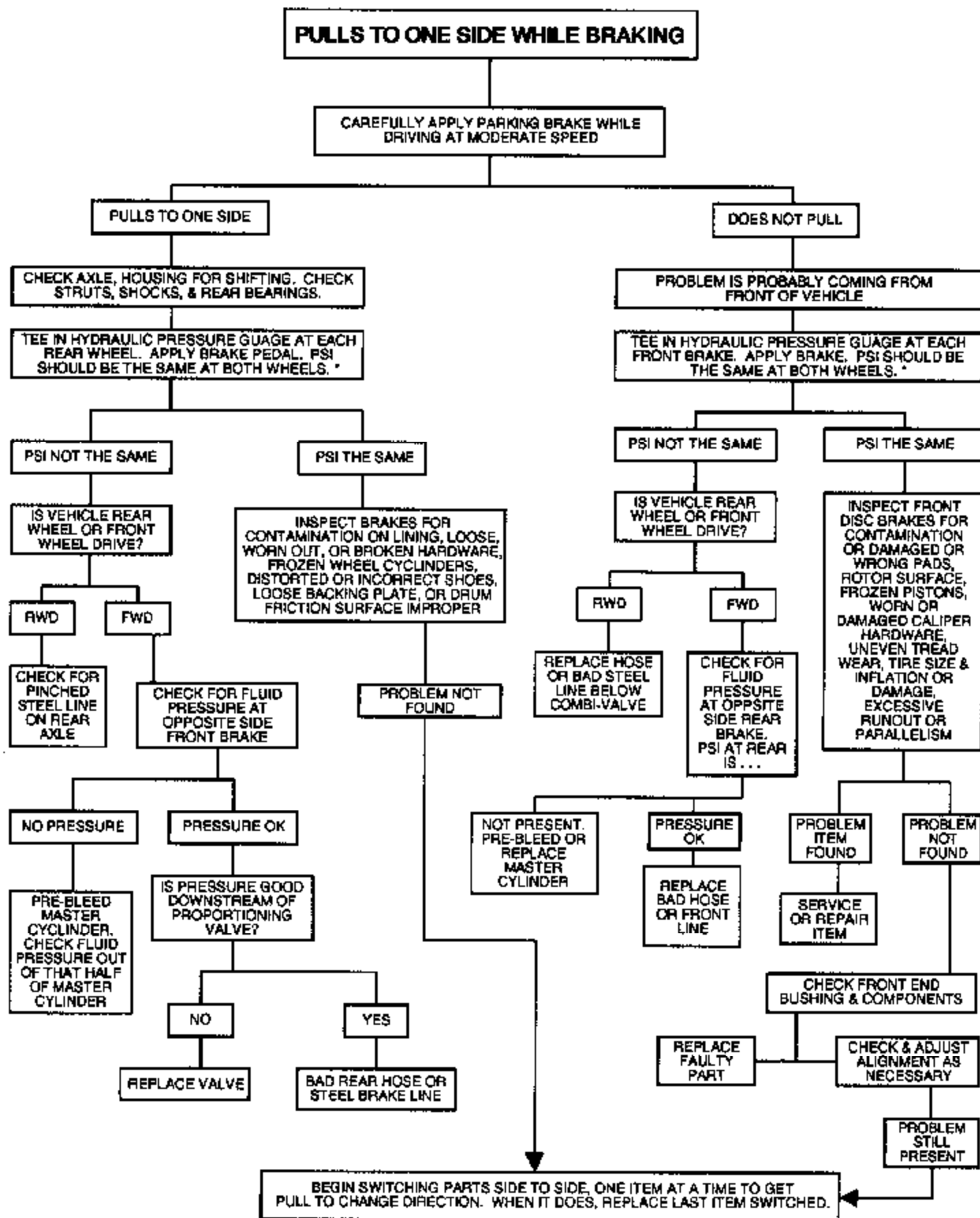


# Diagnostic Flow Charts (Cont.)

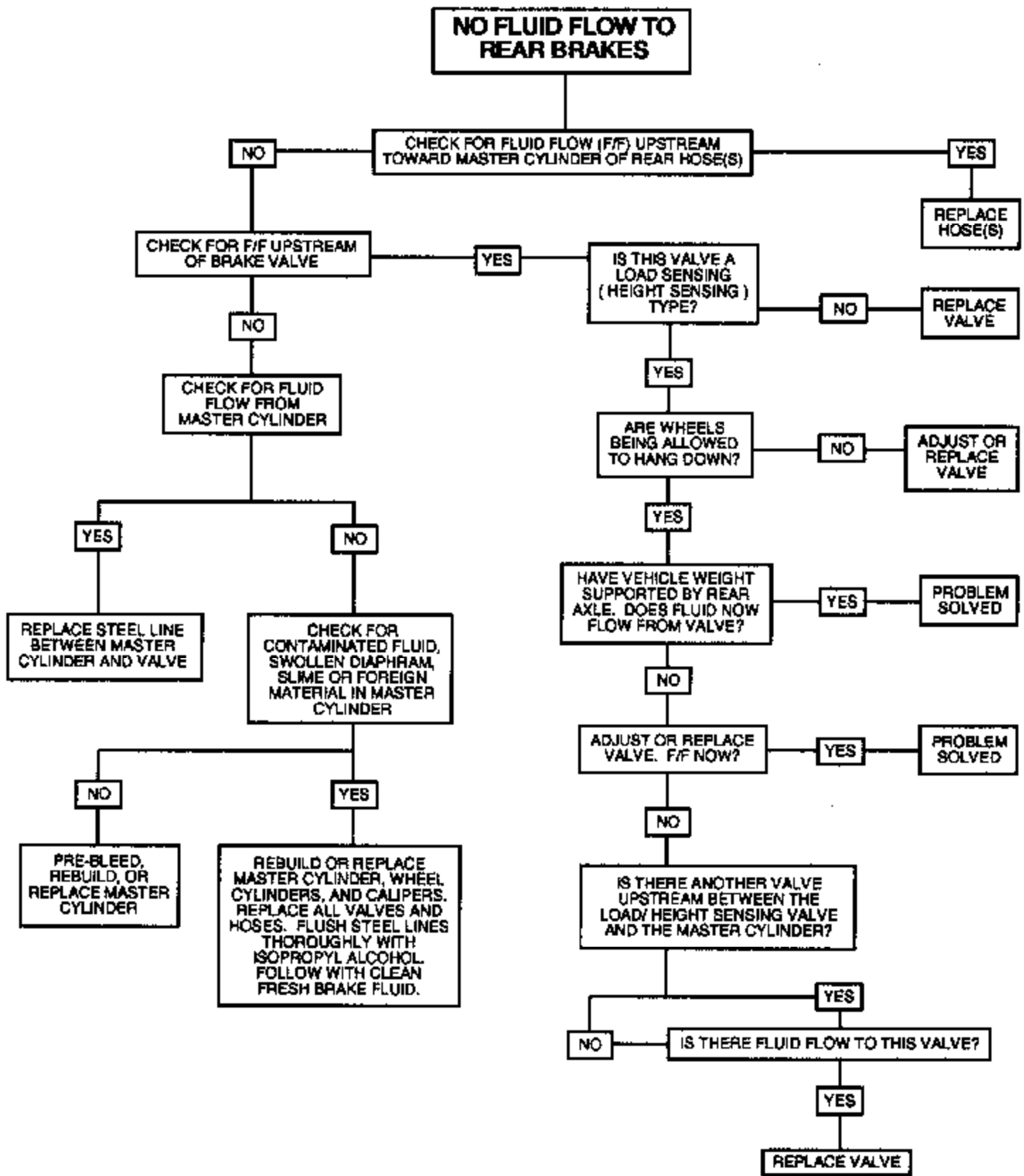


- \* PULL WITH 40-60 FT. LBS. BUT ON ABS EQUIPPED VEHICLES PULL GENTLY, AS ROD CAN COME OUT OF SOCKET.
- \*\* ON SOME COMPACT CARS, PEDAL SHAFT OR FIREWALL MAY BEND, PREVENTING FULL PEDAL RETURN.
- \*\*\* BOTH SIDE SHOULD HAVE SAME TYPE OF PISTON, STEEL & STEEL, ETC. MAKE SURE SLIDING PINS ARE LATEST STYLE; USE ONLY SILICON GREASE.

# Diagnostic Flow Charts (Cont.)



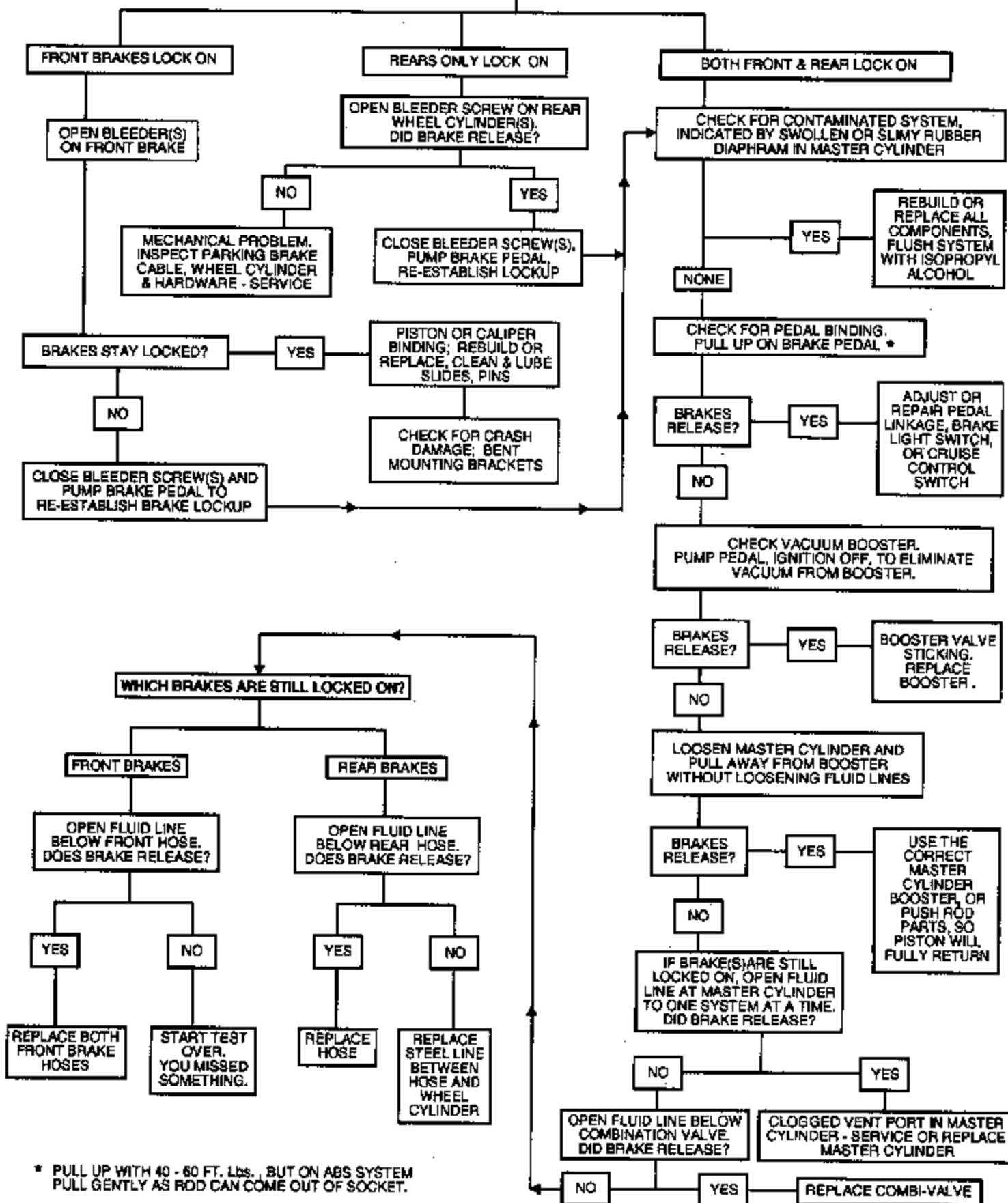
# Diagnostic Flow Charts (Cont.)





# Diagnostic Flow Charts (Cont.)

## BRAKES WILL NOT RELEASE - LOCKED ON REAR WHEEL DRIVE - FRONT/REAR SPLIT HYDRAULIC SYSTEM



\* PULL UP WITH 40 - 60 FT. Lbs., BUT ON ABS SYSTEM  
PULL GENTLY AS ROD CAN COME OUT OF SOCKET.